



Mouse anti Prostate Specific Acid Phosphatase Monoclonal Antibody

Alternative Name(s): Prostate specific acid phosphatase (PSAP)

Order Information

- **Description:** Prostate Specific Acid Phosphatase (PSAP)
- **Catalogue:** 500-6394
- **Lot:** See label
- **Size:** 100ug/200ul
- **Host:** Mouse
- **Clone:** ABM312
- **Application:** IHC(P), IF
- **Reactivity:** Hu, Rt

ANTIGEN PREPARATION

Partially purified prostate acid phosphatase from human seminal plasma.

BACKGROUND

Prostate specific acid phosphatase (PSAP) is a 100 kD glycoprotein present in high concentration in the prostate gland and its secretions. It is one of the two antigenic markers of prostatic carcinoma, the other being prostate specific antigen. It belongs to the kallikrein family of serine proteases and is suggested to act as a hydrolase to split phosphoryl choline in semen and as a transferase. PSAP is measured clinically because its level often rises in the serum in cases of prostatic carcinoma. By immunohistochemical analysis PSAP has been found concentrated within the large secretory vacuoles of the supranuclear portion of the prostatic columnar epithelial cell. In hyperplastic prostates and in benign prostatic tissue adjacent to the prostatic carcinoma, PSAP activity is limited to the acinar or ductal columnar epithelial cells and adjacent luminal content. PSAP reactivity in an extraprostatic tumor is an accurate and sensitive indicator of metastatic prostatic carcinoma

PURIFICATION

The mouse IgG is purified by Protein A-Affinity Chromatography according to Isotyping

FORMULATION

This affinity purified antibody is supplied in sterile Phosphatebuffered saline (pH7.2) containing antibody stabilizer

SPECIFICITY

This antibody recognizes human and rat PSAP. The other species not tested.

STORAGE

The antibodies are stable for 24 months from date of receipt when stored at -20oC to -70oC. The antibodies can be stored at 2oC-8oC for three month without detectable loss of activity. Avoid repeated freezing-thawing cycles.

APPLICATIONS/SUGGESTED WORKING DILUTIONS*

- Western Blot: 0.1-1 µg/ml
- ELISA: 0.01-0.1 µg/ml
- Immunoprecipitation: 2-5 µg/ml
- IHC: 2-10 µg/ml
- Flow cytometry: Not tested
- Molecular Weight: 58.0
- Positive Control: Kidney Tissue
- Cellular Location: Cell Membrane

*Optimal dilutions should be determined by researchers for the specific applications.

FOR RESEARCH USE ONLY.

AbboMax, Inc 2528 Qume Drive, Suite 8, San Jose, California 95131, USA
1 408-573-1898 (Tel). 1 408-573-1858 (Fax). www.abbomax.com info@abbomax.com

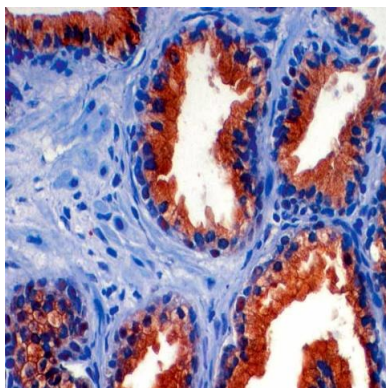


FOR RESEARCH USE ONLY.

AbboMax, Inc 2528 Qume Drive, Suite 8, San Jose, California 95131, USA
1 408-573-1898 (Tel). 1 408-573-1858 (Fax). www.abbomax.com info@abbomax.com



DATA ATTACHMENTS



Immunohistochemistry: The human prostate tissue (FFPE) stained with Mouse anti PSAP monoclonal antibody (Cat#500-6394) at 1:50. (Note: formalin-fixed, paraffin-embedded sections need 15 minutes heat-induced epitope retrieval in 10 mM citrate buffer, pH 6.0, and 30 minutes incubation at room temperature with the primary antibody).

REFERENCES

FOR RESEARCH USE ONLY.

AbboMax, Inc 2528 Qume Drive, Suite 8, San Jose, California 95131, USA
1 408-573-1898 (Tel). 1 408-573-1858 (Fax). www.abbomax.com info@abbomax.com